

## APPENDIX A

This appendix includes documentation of pollution from construction sites throughout the state. The pictures and documentation was collected by signatories to this comment and other organizations documenting construction site pollution throughout the state. This information is included to provide physical evidence and examples to support the findings, concerns, and recommendations contained within this comment letter. Please let us know if you have any questions about any of the documentation contained within.

### **Assateague Coastal Trust**

#### Oceans Landing II







Other Construction Site Pollution Maryland's Eastern Shore









## **Blue Water Baltimore**

Shannon & Brehms Lane Baltimore Maryland





Free Dirt Sign, Baltimore Maryland







Crittenton Place, Baltimore Maryland







Ash Street, Baltimore Maryland





Other Construction Pollution, Baltimore Maryland





































## **Patuxent Riverkeeper**

Two Rivers Development, Patuxent River watershed, Anne Arundel County









**Jesse Illif – Arundel Rivers**



































**Robert Wiley – Calvert County Maryland**

































## **Gunpowder Riverkeeper – Baltimore and Harford County Maryland**

Construction Runoff to Tier II Little Gunpowder Falls





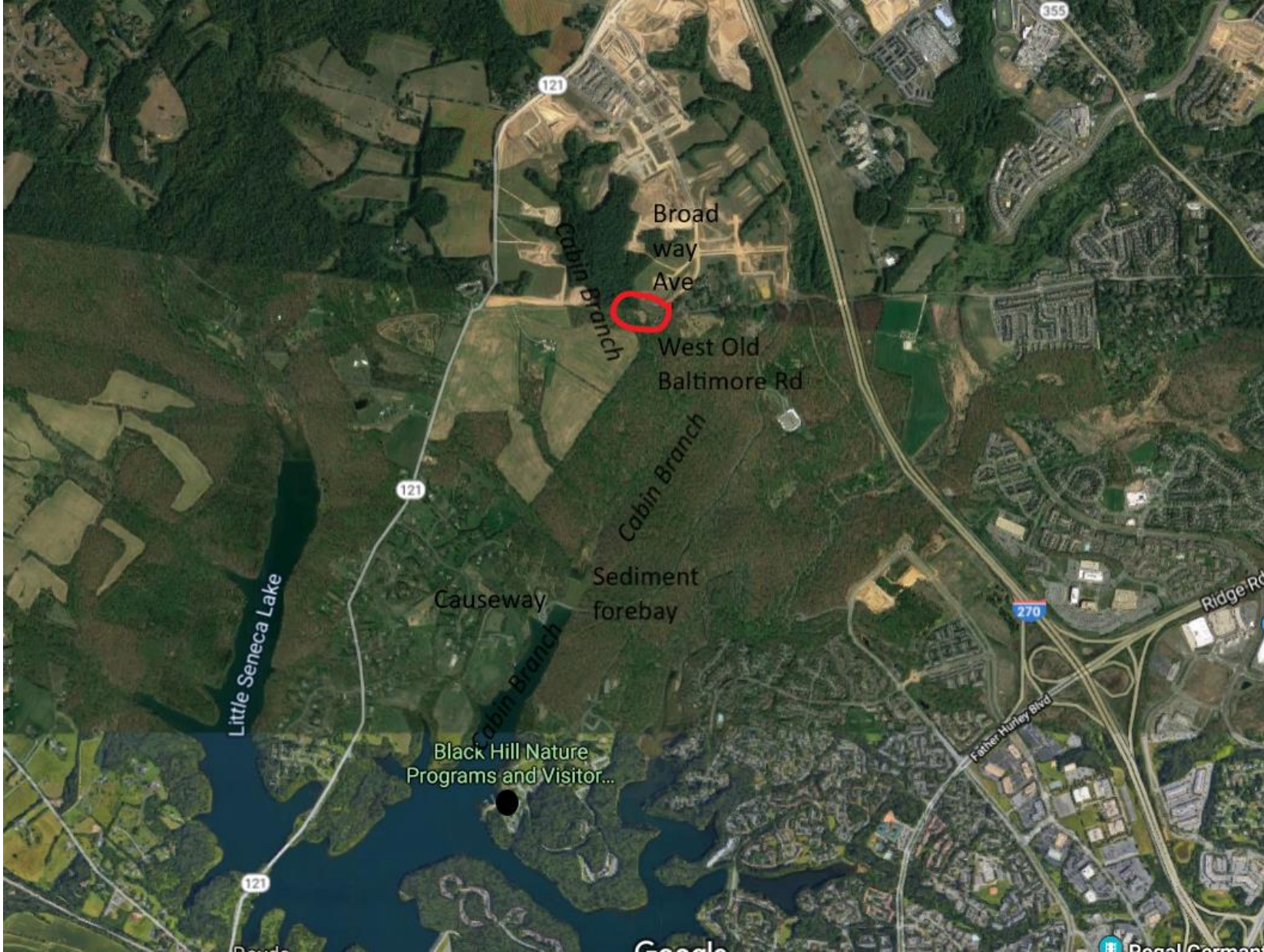




**Friends of Ten Mile Creek – Montgomery County**

**LITTLE SENECA LAKE, CABIN BRANCH, AND WEST OLD BALTIMORE ROAD IN CLARKSBURG/BOYDS  
ON NOVEMBER 1 AND 2, 2019, AFTER THE OCTOBER 31 STORM**

1. Map of the Cabin Branch/Little Seneca Lake region (red circle shows location of West Old Baltimore Rd construction in the photos below)





**LITTLE SENECA LAKE, CABIN BRANCH, AND WEST OLD BALTIMORE ROAD IN CLARKSBURG/BOYDS  
ON NOVEMBER 1 AND 2, 2019, AFTER THE OCTOBER 31 STORM**

**2. Map of Cabin Branch and West Old Baltimore Road construction**





**LITTLE SENECA LAKE, CABIN BRANCH, AND WEST OLD BALTIMORE ROAD IN CLARKSBURG/BOYDS  
ON NOVEMBER 1 AND 2, 2019, AFTER THE OCTOBER 31 STORM**

3. The Cabin Branch arm of Little Seneca Lake from the Black Hill Regional Park visitors center, looking southwest, Friday afternoon, November 1





**LITTLE SENECA LAKE, CABIN BRANCH, AND WEST OLD BALTIMORE ROAD IN CLARKSBURG/BOYDS  
ON NOVEMBER 1 AND 2, 2019, AFTER THE OCTOBER 31 STORM**

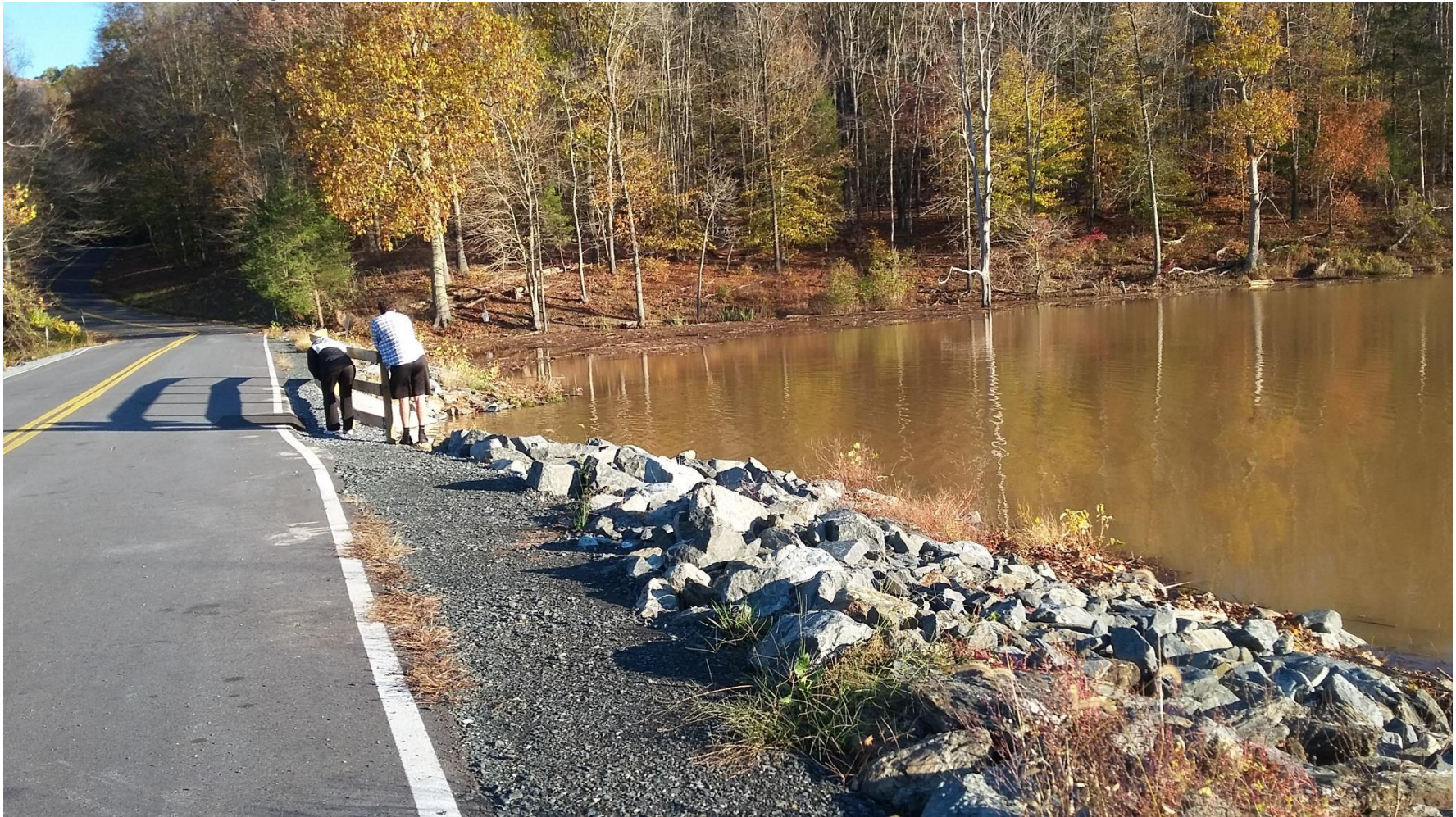
4. The Cabin Branch arm of Little Seneca Lake, downstream from the sediment forebay, on Friday afternoon, November 1





**LITTLE SENECA LAKE, CABIN BRANCH, AND WEST OLD BALTIMORE ROAD IN CLARKSBURG/BOYDS  
ON NOVEMBER 1 AND 2, 2019, AFTER THE OCTOBER 31 STORM**

5. The Cabin Branch arm of Little Seneca Lake, on the downstream side of the Black Hill Road causeway, Friday afternoon, November 1. The stormwater on Thursday night did not overtop the causeway.





**LITTLE SENECA LAKE, CABIN BRANCH, AND WEST OLD BALTIMORE ROAD IN CLARKSBURG/BOYDS  
ON NOVEMBER 1 AND 2, 2019, AFTER THE OCTOBER 31 STORM**

6. The Cabin Branch sediment forebay, on the upstream side of the Black Hill Road causeway, Friday afternoon, November 1.





**LITTLE SENECA LAKE, CABIN BRANCH, AND WEST OLD BALTIMORE ROAD IN CLARKSBURG/BOYDS  
ON NOVEMBER 1 AND 2, 2019, AFTER THE OCTOBER 31 STORM**

7. The Cabin Branch arm of Little Seneca Lake on the shore below the visitors center, Friday afternoon, November 1





**LITTLE SENECA LAKE, CABIN BRANCH, AND WEST OLD BALTIMORE ROAD IN CLARKSBURG/BOYDS  
ON NOVEMBER 1 AND 2, 2019, AFTER THE OCTOBER 31 STORM**

8. Little Seneca Lake water at the dock by the gazebo downstream from the boat rental, Friday afternoon, November 1



**LITTLE SENECA LAKE, CABIN BRANCH, AND WEST OLD BALTIMORE ROAD IN CLARKSBURG/BOYDS  
ON NOVEMBER 1 AND 2, 2019, AFTER THE OCTOBER 31 STORM**

9. The Cabin Branch arm of Little Seneca Lake, on the downstream side of the Black Hill Road causeway, Saturday morning, November 2.





**LITTLE SENECA LAKE, CABIN BRANCH, AND WEST OLD BALTIMORE ROAD IN CLARKSBURG/BOYDS  
ON NOVEMBER 1 AND 2, 2019, AFTER THE OCTOBER 31 STORM**

10. The Cabin Branch sediment forebay, on the upstream side of the Black Hill Road causeway, Saturday morning, November 2.



**LITTLE SENECA LAKE, CABIN BRANCH, AND WEST OLD BALTIMORE ROAD IN CLARKSBURG/BOYDS  
ON NOVEMBER 1 AND 2, 2019, AFTER THE OCTOBER 31 STORM**

11. Southward view of the Cabin Branch arm of Little Seneca Lake, downstream from the Black Hill Road causeway, Saturday morning, November 2.





**LITTLE SENECA LAKE, CABIN BRANCH, AND WEST OLD BALTIMORE ROAD IN CLARKSBURG/BOYDS  
ON NOVEMBER 1 AND 2, 2019, AFTER THE OCTOBER 31 STORM**

12. Westward view of West Old Baltimore Rd road construction, west of Broadway Avenue, over Cabin Branch, Saturday morning, November 2.





**LITTLE SENECA LAKE, CABIN BRANCH, AND WEST OLD BALTIMORE ROAD IN CLARKSBURG/BOYDS  
ON NOVEMBER 1 AND 2, 2019, AFTER THE OCTOBER 31 STORM**

13. Sediment accumulation in Cabin Branch from the north side of West Old Baltimore Rd, Saturday morning, November 2.





**LITTLE SENECA LAKE, CABIN BRANCH, AND WEST OLD BALTIMORE ROAD IN CLARKSBURG/BOYDS  
ON NOVEMBER 1 AND 2, 2019, AFTER THE OCTOBER 31 STORM**

14. Gullying into Cabin Branch from the north side of West Old Baltimore Rd, Saturday morning, November 2.





**LITTLE SENECA LAKE, CABIN BRANCH, AND WEST OLD BALTIMORE ROAD IN CLARKSBURG/BOYDS  
ON NOVEMBER 1 AND 2, 2019, AFTER THE OCTOBER 31 STORM**

15. Gullying into Cabin Branch from the north side of West Old Baltimore Rd, Saturday morning, November 2.





**LITTLE SENECA LAKE, CABIN BRANCH, AND WEST OLD BALTIMORE ROAD IN CLARKSBURG/BOYDS  
ON NOVEMBER 1 AND 2, 2019, AFTER THE OCTOBER 31 STORM**

16. Sediment accumulation in Cabin Branch on the north side of West Old Baltimore Rd, Saturday morning, November 2.





**LITTLE SENECA LAKE, CABIN BRANCH, AND WEST OLD BALTIMORE ROAD IN CLARKSBURG/BOYDS  
ON NOVEMBER 1 AND 2, 2019, AFTER THE OCTOBER 31 STORM**

17. Sediment accumulation in Cabin Branch on the north side of West Old Baltimore Rd, Saturday morning, November 2.





**LITTLE SENECA LAKE, CABIN BRANCH, AND WEST OLD BALTIMORE ROAD IN CLARKSBURG/BOYDS  
ON NOVEMBER 1 AND 2, 2019, AFTER THE OCTOBER 31 STORM**

18. Gullying on the north side of West Old Baltimore Rd next to Cabin Branch, Saturday morning, November 2.





**LITTLE SENECA LAKE, CABIN BRANCH, AND WEST OLD BALTIMORE ROAD IN CLARKSBURG/BOYDS  
ON NOVEMBER 1 AND 2, 2019, AFTER THE OCTOBER 31 STORM**

19. Sediment accumulation in the Cabin Branch culvert under West Old Baltimore Rd, Saturday morning, November 2.





**LITTLE SENECA LAKE, CABIN BRANCH, AND WEST OLD BALTIMORE ROAD IN CLARKSBURG/BOYDS  
ON NOVEMBER 1 AND 2, 2019, AFTER THE OCTOBER 31 STORM**

20. Gullying and drainage piping from the north side of West Old Baltimore Rd into Cabin Branch, Saturday morning, November 2.





**LITTLE SENECA LAKE, CABIN BRANCH, AND WEST OLD BALTIMORE ROAD IN CLARKSBURG/BOYDS  
ON NOVEMBER 1 AND 2, 2019, AFTER THE OCTOBER 31 STORM**

21. Gullying from the north side of West Old Baltimore Rd and sediment accumulation in Cabin Branch, Saturday morning, November 2.





**LITTLE SENECA LAKE, CABIN BRANCH, AND WEST OLD BALTIMORE ROAD IN CLARKSBURG/BOYDS  
ON NOVEMBER 1 AND 2, 2019, AFTER THE OCTOBER 31 STORM**

22. Westward view uphill on West Old Baltimore Rd west of the Cabin Branch culvert, Saturday morning, November 2.





**LITTLE SENECA LAKE, CABIN BRANCH, AND WEST OLD BALTIMORE ROAD IN CLARKSBURG/BOYDS  
ON NOVEMBER 1 AND 2, 2019, AFTER THE OCTOBER 31 STORM**

23. Top of drainage pipe into Cabin Branch on the north side of West Old Baltimore Rd, Saturday morning, November 2





**LITTLE SENECA LAKE, CABIN BRANCH, AND WEST OLD BALTIMORE ROAD IN CLARKSBURG/BOYDS  
ON NOVEMBER 1 AND 2, 2019, AFTER THE OCTOBER 31 STORM**

24. Sediment & gullying on the north side of West Old Baltimore Rd east of the Cabin Branch culvert, looking west, Saturday morning, November 2.





**LITTLE SENECA LAKE, CABIN BRANCH, AND WEST OLD BALTIMORE ROAD IN CLARKSBURG/BOYDS  
ON NOVEMBER 1 AND 2, 2019, AFTER THE OCTOBER 31 STORM**

25. Top of drainage pipe into Cabin Branch on the south side of West Old Baltimore Rd, Saturday morning, November 2.





**LITTLE SENECA LAKE, CABIN BRANCH, AND WEST OLD BALTIMORE ROAD IN CLARKSBURG/BOYDS  
ON NOVEMBER 1 AND 2, 2019, AFTER THE OCTOBER 31 STORM**

26. Sediment and gullying east towards Cabin Branch on the south side of West Old Baltimore Rd, looking east, Saturday morning, November 2.





**LITTLE SENECA LAKE, CABIN BRANCH, AND WEST OLD BALTIMORE ROAD IN CLARKSBURG/BOYDS  
ON NOVEMBER 1 AND 2, 2019, AFTER THE OCTOBER 31 STORM**

27. Sediment fencing on the south side of West Old Baltimore Rd, looking east, Saturday morning, November 2.

